

Lentivirus Titer p24 ELISA Kit

Cat.No. L00938

Key Features



Short Assay Time

The complete titration can be finished within 2.5 hours



Wide Linear Range

31.25 - 2000 pg/mL

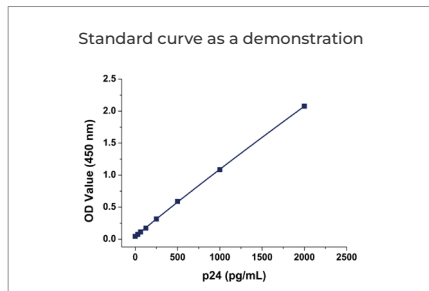


High Assay Precision

Intra-assay CV \leq 10% and Inter-assay CV \leq 10%

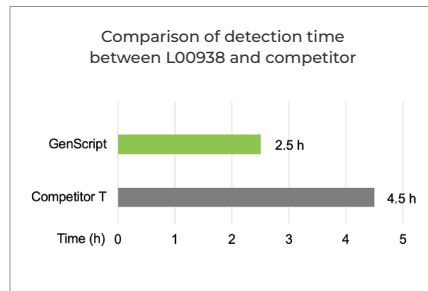
Validation Data

• Standard Curve



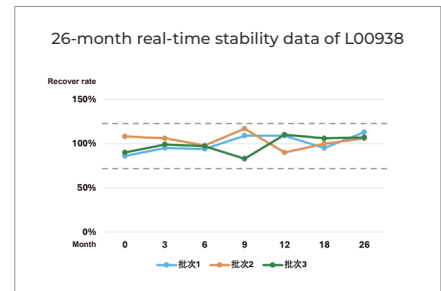
Standard curve

• Short Assay Time



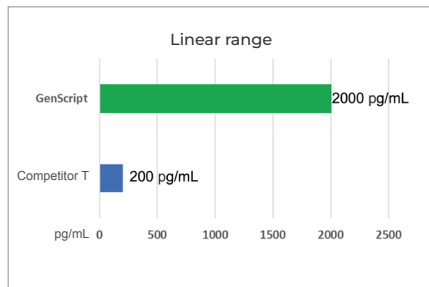
The detection time of L00938 is shorter than that of competitor T

• High Stability



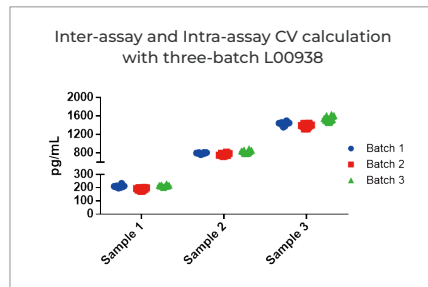
Ultra high stability

• Wide Linear Range



Ultra wide linear range

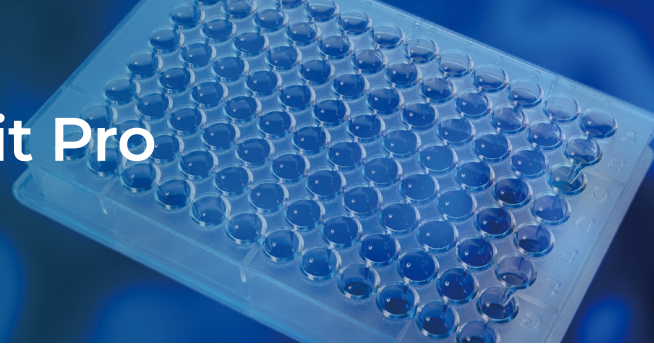
• High Assay Precision



Intra-assay CV \leq 10% and Inter-assay CV \leq 10%

Lentivirus Titer p24 ELISA Kit Pro

Cat.No. L00974



Key Features



High Accuracy

Remove free p24 and only detect p24 protein on lentivirus capsid



Short Assay Time

The complete titration can be finished within 3 hours



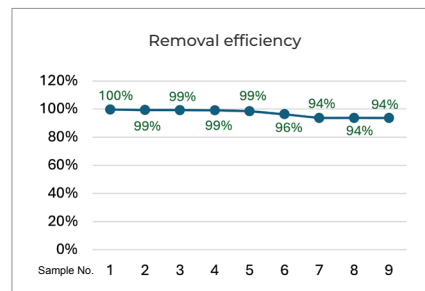
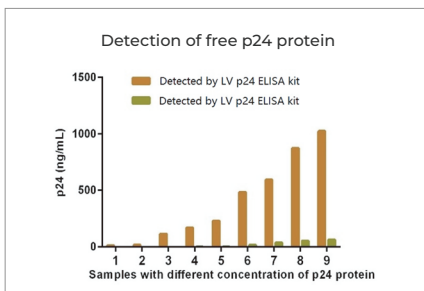
High Compliant With Regulations

Comply with the latest regulations in the "Technical Guiding Principles for Pharmaceutical Research and Evaluation of In Vitro Gene Modification Systems (Trial)", Drug Evaluation Center of the State Drug Administration, May 2022

* Attention should be paid to the impact of free p24 protein on the results

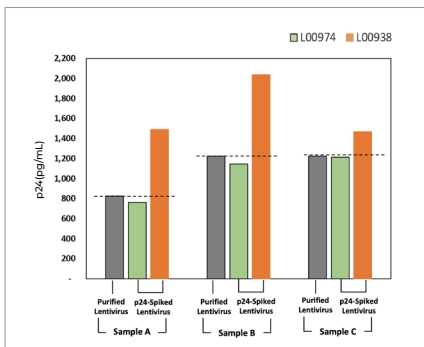
Validation Data

Effectively reduce interference from free p24



The removal efficiency of free p24 protein by L00974 is $\geq 90\%$

High accuracy



L00974 has higher accuracy

L00974 only detect the p24 protein in the lentiviral capsid; L00938 detect the total p24 (p24 protein in the lentiviral capsid and free p24 protein)

* Purified Lentivirus Sample:

The sample containing purified lentivirus particles with little or no free p24 protein.

* p24-Spiked Lentivirus Sample:

Free p24 protein was spiked into the samples from purified lentiviral samples.